

Digitizer 3.0 Capture Card



Feature Highlights

- PiP capability for video within graphics display, customizable
- Stream/record over IP using Windows Media Encoder, Real Producer and other applications
- RGB, DVI-D, Composite, and S-Video input support
- On board processor dedicated to detecting input signals
- DVI and RGB input with EDID support
- Up to 23 fps SXGA and 30 fps video
- Dual Frame Buffer
- FPGA for customization



Overview

The Digitizer 3.0 Card is a significant technical step forward in the NCast product line, offering UXGA and PiP (Picture in Picture) capabilities. The Digitizer card functions as an RGB, DVI and video capture device. The card can be used for remote viewing, replacing dedicated monitors, and webcasting over IP. The Digitizer 3.0 card contains a proven algorithm used for VGA/DVI detection, an algorithm used by the majority of flat panel monitor manufacturers. The plug-in card is designed to work with both Windows 2000/XP and Linux PC desktops.

Applications

- Stream and archive a prepared presentation easily to PC users with Windows Media Encoder.
- View multiple feeds on your Windows desktop.
- Send RGB/DVI or video over IP.

Technical Specifications

Graphic Inputs

RGB on DB15, DVI-D
Inputs up to 1900x1200
S-Video, Composite
See table on back for all supported resolutions

Graphics Performance

720x480, 720x576- full frame rate
800x600- 30 fps
1024x768- 30 fps
1280x1024- 23 fps
1600x1200- 15 fps

Streaming Capabilities

Requires encoding application such as Windows Media Encoder or Real Producer
Up to UXGA quality streaming
Compatible with QuickTime, WMP, and Real

Software

Software development kit included for custom applications
 NCast Screen capture software application
 NCast Control Program for settings

Max Pixel Rate

165 MHz

Graphics Sampling

24 bits per pixel
 8-8-8 format

Operating Systems

Windows 2000/XP
 Linux

Color Depths Support

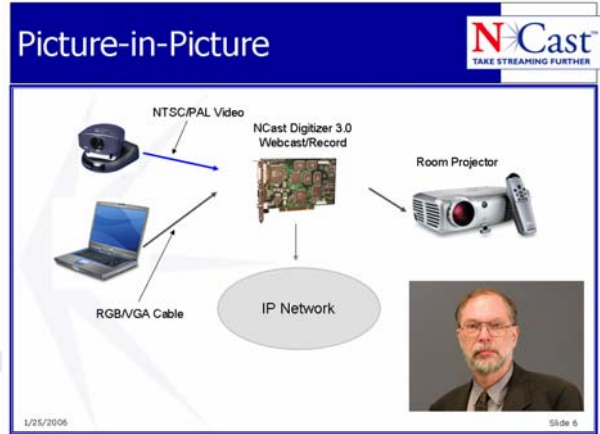
RGB24, RGB32, YUV, YUYV, I420

Supported Standard Video Input Modes

Video	Resolution	Frequency
NTSC- 480i	720x480	60Hz
PAL- 576i	720x576	50Hz
Progressive- 480p	720x480	60Hz
Progressive- 576p	720x576	50Hz
HDTV- 720p	1280x720	50, 60Hz
HDTV- 1080i, 1080p	1920x1080, 1920x1080	50, 60Hz

Supported Standard Graphics Input Modes

Resolution	Resolution	Frequency
VGA	640x350	70, 85Hz
VGA	640x400	56, 70, 85Hz
VGA	640x480	60, 66, 67, 72, 75, 85Hz
VGA	640x480	60, 72, 70, 75, 85Hz
SVGA	720x350	70Hz
SVGA	720x400	70, 85Hz
SVGA	800x600	56, 60, 72, 75, 85Hz
SVGA	832x624	75Hz
XGA	1024x768	60, 70, 75, 85Hz
XGA	1152x864	70, 75Hz
XGA	1152x870	75Hz
XGA	1152x900	66, 76Hz
SXGA	1280x960	60, 85Hz
SXGA	1280x1024	60, 67, 70, 72, 75, 76, 85Hz
UXGA	1600x1200	60, 75Hz
WUXGA	1920x1200	60Hz



Supported Interfaces (Buses)

PCI 33Mhz, 32Bit BUS
 Acquisition mode

Video and Graphics Input Controls

Graphics positioning (vertical slant, horizontal start)
 Acquisition mode

Temperature

0 to 35 deg. C

Humidity

5% to 90% non-condensing

NCast Corporation

155A Moffett Park Drive, Suite 103
 Sunnyvale, CA 94089
 Main: 800-765-7718 Voice: 408-541-9196
 Fax: 408-541-9231 info@ncast.com
www.ncast.com